

wedi Fundo Riolito neo



Overview & General Product Description of the wedi Fundo Shower Systems

All wedi Waterproof Shower Systems including point and linear drain models offer reliable, cost-efficient solutions for constructing 100% waterproof and mold proof showers. The product systems are entirely waterproof due to its XPS extruded polystyrene foam core. These systems are easy and clean to install due to its high prefabrication level. They open up a whole new world of design possibilities for showers, wet areas and baths when customized to fit your jobsite requirements.

wedi Shower Systems blend the traditional values of design flexibility and robustness as previously only enjoyed with screed installations, while offering added values that come with state-of-the-art material and manufacturing technologies. These added values come in form of many performance advantages. Especially over traditional screed installations or over other currently known methods for building showers such as those using sheet – or liquid waterproofing membranes in an attempt to manage water exposure. The most unique advantage is the complete and natural core waterproofness of the wedi product and its entire assembly. Every detail of the assembly is part of the wedi waterproofing approach: even down to the factory integrated drain parts. The concept of the wedi Fundo Shower System's water management describes a true "water out" performance. Neither products nor the assembly of the wedi Fundo shower system is subjected to the risks so commonly found in other methods of shower installation. When installing wedi Fundo Shower Systems in combination with wedi building panels, the proprietary wedi 610 adhesive sealant and any of our curbs, niches or seats accessories, you can eliminate the following worries altogether:

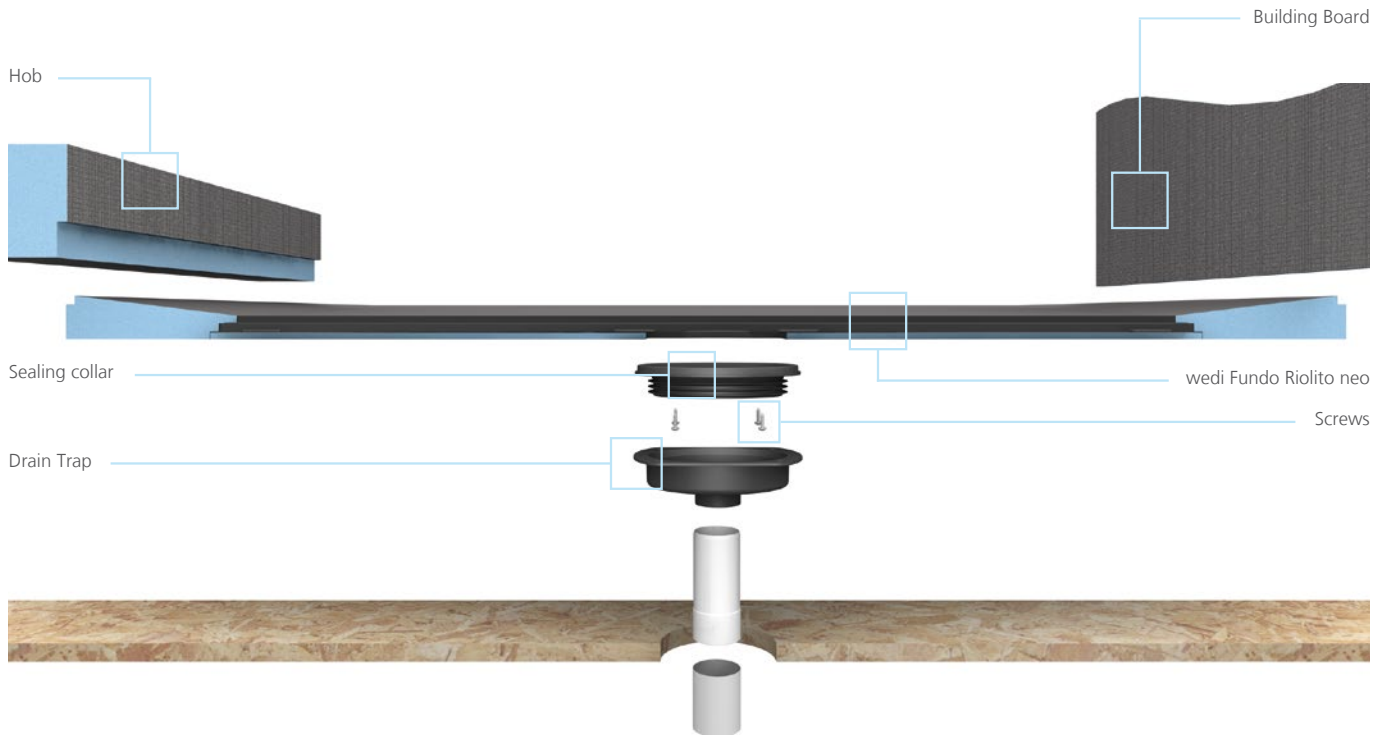
- No overlapping sheet waterproofing seams with just thinset in between
- No risk of forming pinholes as with installation of very thin liquid membranes
- No weepholes and clogging as with liner installations
- No liner cracks due to aging or exposure to elements
- No risky liner seams in larger size showers nor any risky corner liner tapes
- No mold or discoloration worries as with absorbing and permanently wet screed beds

These added values and its detail perfections eliminate the technical concerns in shower installations. But this is not where wedi shower systems stop offering its added values: The wedi Fundo shower system adds to your productivity and enables you to provide real value to your customers: Our wedi Fundo Shower systems reduce the installation time for just the shower floor from a 2–3 day process (includes drying times) to only 30 minutes when compared to traditional methods built with pre slope, vinyl liner and final mortar bed. wedi helps you to turn showers into service quicker, cleaner, safer. The exact and consistently shaped slope fields support perfection in tile setting and design. The cement based resin surface coatings on our products provide a great bond surface for any tile, stone and many other materials. Using any cement based thinset adhesives in installation. The insulation properties of the extruded foam core of our wedi systems keep the tile warmer on the floor and add to better insulation of the wall. And all this under one warranty for the entire shower from floor to wall.

wedi Fundo Ligno is designed to provide for a low profile base thickness of only 3/4" (19 mm). This allows for a fast and flush installation into a subfloor assembly without cutting into floor joists. The system is designed to work without a curb. Enjoy the ease of installation without creating a structural hazard because you maintain the structural subfloor panels installed between floor joists under the wedi Fundo Ligno. Because barrier free showers may be exposed to heavy point loads (e.g. wheel chair), you can confidently rely on the structural strength of the wedi base and subfloor as well as the wedi Fundo's traditional strong cement based surface for ideal tile bond using any suitable cement based tile adhesives or grouts. As always with wedi Fundo Shower Systems, wedi Fundo Ligno is designed to interlock and work with wedi Building panels, wedi 610 adhesive sealant, wedi Fasteners, wedi Seats and Benches, wedi Niches and many more accessories, that truly complete your shower installation and waterproofing system. The installation is fast, modular but customizable, and covered by wedi's full system warranty.

Drain to Base Assembly

Several models with 4 way slope fields provide for a perfect installation when recessing the base into a subfloor where a flush to the floor entry is required. The second option includes models with a true one way slope towards the linear drain. This latter option is especially designed to accommodate tub to shower conversions without the need to ever move the floor drain pipe.



! Fundo Riolito neo employs different drain and drain cover assembly parts. Please refer to the installation manual in the actual product box.

In this section Fundo Riolito neo we are showing the Fundo Riolito neo Drain and Drain Cover parts and assembly.

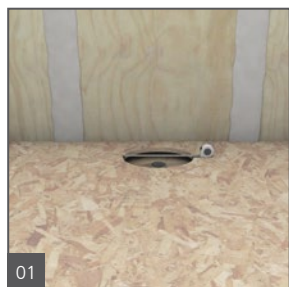
Several Riolito neo models naturally feature different perimeter height or thickness at the edge. Therefore, pre-made standard notch connections of wedi hobs must be modified in the field for a tight fit to the bases. Ramps and Extension boards can naturally not fit to all models and might be modified in the field as well.



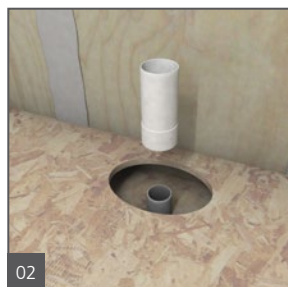
wedi Fundo Riolito neo Installation

Before Installation:

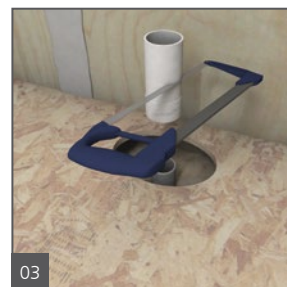
- Subfloor and wall framing construction meets applicable building code and is sufficiently loadbearing, even and free of contaminants.
- Cut the DN 50 Floor waste pipe minimum 70 mm below the top of the floor surface.
- To have the Type N solvent cement primer and glue for our ABS drain trap
- Make sure to use a PVC primer and glue for the Adapter.
- Only wedi products (Building Boards, Hob, wedi 610 adhesive sealant and fasteners) are used for wedi Fundo Shower System assembly.
- Installer has received instructions from wedi technical sales staff or is informed about proper installation methods as described.
- wedi shower bases can be cut to size using a skilsaw. The Z notch channel must be remade and cleaned from sawdust or contaminants.



Cut DN 50 pipe minimum 70 mm below the top of the Subfloor. Use the oval shape cutting template to cut subfloor using a jigsaw. Position the oval template according to the position of the Riolito model's pre-determined position of its drain location, relative to the squared wall framing...



... to allow wedi drain trap to be inserted and connected to floor pipe using appropriate ABS compatible or multipurpose cement glue. Please also check cement glue compatibility to floor pipe material. The drain and trap have to be secured to the subfloor. Drain recess cut out must not add deflection to subfloor.



Cut the Adapter 32 mm below the subfloor surface. Make sure that the cut out fits to the Fundo board drain.



Assemble the drain unit following the instruction drawing. wedi's Riolito neo bases can be cut to size on all sides making drain positions close to the wall possible. Please do not cut into the linear drains plastic flange integrated into the coated foam part of the base. If you are using a 10 mm building board, the channel at the new base perimeter must be reestablished to 10 x 10 mm. When cutting close to the drain channel always leave enough wedi foam for re-making the needed 10 x 10 mm channel.



05
Glue and seal the wedi drain trap to the DN 50 pipe. Mount the sealing collar to the wedi Riolito neo underside counterpart using a manual phillips screwdriver.



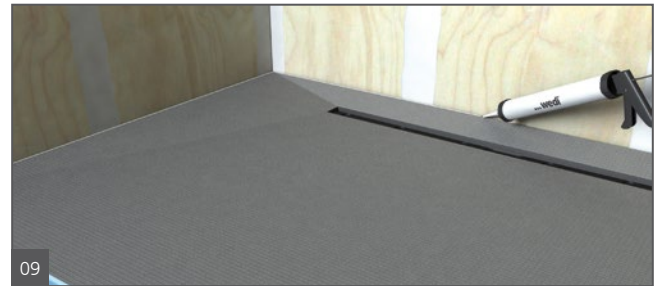
06
Apply a skim coat and finally a combed through bed of a thinset using modified thinset and a 10 x 10 mm notch trowel.



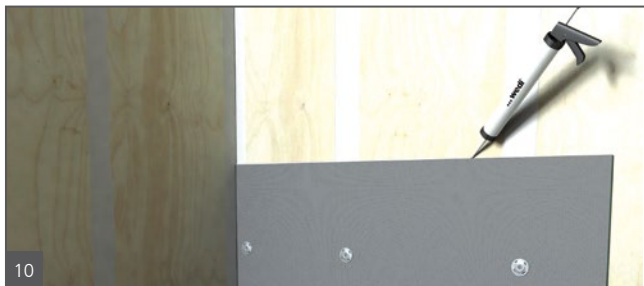
07
Trowel the thinset on the rear side of the Fundo again using a 10 x 10 mm notch trowel.



08
Press the Fundo firmly into the thinset bed, ensuring that the installation is level and void free. Ensure wedi drain's sealing gasket is firmly inserted in the wedi trap with no chance that thinset could have pushed into this connection area.
Apply some weight equally and leave on surface and drain area to allow the thinset to initially cure without being disturbed (e.g. thinset bags). Do NOT step on the drain module to push/connect to drain body or thinset. Ensure there is 100 % thinset supporting the drain channel area over a completely flat subfloor.



09
Set up a continuous 10 mm bead of wedi 610 adhesive sealant at the perimeter channel and only in areas where you can immediately install a wedi Building Board into the fresh sealant.



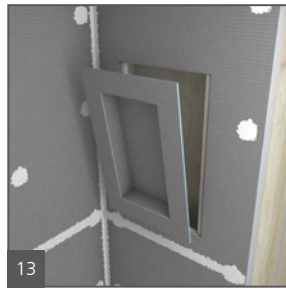
10
Push the wedi board all the way into the channel of the shower base channel and its bead of sealant. Smooth out any pushed out sealant on inside seam using a putty knife. Fasten the boards directly to the studs starting 300 mm above the base and at a rate of 1 fastener per 300 mm. One extra fastener is set into the seam to the next board to crate a flush transition.



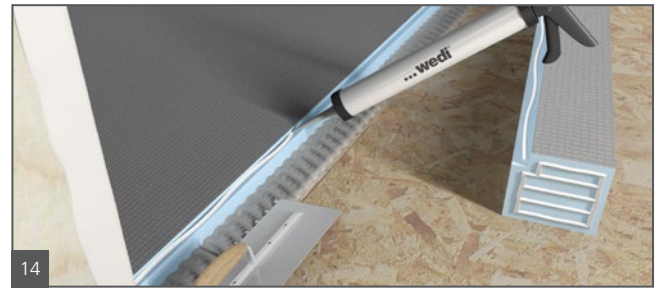
11
Apply continuous 10 mm beads of sealant between all connections of boards and install with tightly butted seams. Excess sealant must be spread flat with a putty knife. All seams and fastener heads in the assembly are covered with a secondary 10 mm bead of sealant and spread flat. The seams should be covered to 25 mm on either side of seam. All fastener/washers are covered with sealant stretching 25 mm over the washer edges.



wedi Niches are installed in a cut out in the wedi wall and attached with it's flange right into the center of 16 o.c. studs. wedi sealant is set along the connection of wall to niche.



2 Fasteners each side of the niche are set to create a flush transition to the wall boards. Another 10 mm bead of wedi sealant is spread over fasteners and seams.



A continuous 10 mm bead of sealant is set into the channel and along the vertical hob notch part. A circle of 10 mm sealant bead is set against the wall boards where the hob attaches. A 10 x 10 mm bed of thinset mortar is applied to the subfloor and just a skimcoat on the foam bottom part of the hob as a best practice. The tightly cut to fit hob is pressed into the connection. Weight is applied on and against the hob (from outside) and another 10 mm bead of sealant is applied over all hob seams and spread flat. The seams must be covered 20 – 25 mm either side of a seam.

! Hob connection notches must be cut to fit select Riolito neo bases with perimeter thickness higher than 40 mm. For a fully waterproofed installation please install wedi sealing gaskets for mixing valve and shower head cut outs.


Installation instructions wedi Fundo Riolito neo Drain Cover

01 Drain Cover Fundo Riolito neo standard: High Grade Polished Stainless Steel Standard Version

02 Drain Cover Fundo Riolito neo tileable: Can be tiled with epoxy glue/adhesive. Can be used for 6 and 10 mm tile / stone (reverse cover)
Drain cover can be adjusted from + 5 mm to + 25 mm from Riolito neo base surface. Adjusting feet/cover supports can be extended or cut to size.



wedi Fundo Riolito neo | Shower Base, with Integrated Channel Drain

	Description	External Dimensions Length x Width x Height	Channel Length	Item #
	wedi Fundo Riolito neo, floor base, with channel drain	1220 x 1020 x 50 mm, single fall	800 mm	075100100
	wedi Fundo Riolito neo, floor base, with channel drain	914 x 1524 x 51 mm, four sided fall	1100 mm	075100016
	wedi Fundo Riolito neo, floor base, with channel drain	1220 x 1524 x 63 mm, four sided fall	700 mm	075100012
	wedi Fundo Riolito neo, floor base, with channel drain	1220 x 1830 x 51 mm, four sided fall	1100 mm	075100014

wedi Fundo Riolito neo Drain Kit

	Description	Unit	Item #
	wedi Fundo Riolito neo Drain Kit	1 pc	US1000042



Did you know?

Great Quality Installation results depend on not only having great products to use – the Know-How and Experience in how to use them is key too. wedi trained and certified all Bäumler Quality Construction installers in my team and now they fully know and appreciate what they can achieve with wedi.

This educational service is offered to all professional contractors of all trades and wedi's local Technical Sales Support Managers come out on site and install with you when you do your first wedi shower installation. Your peace of mind – at no charge. Just a call away!



wedi Australia & New Zealand

Phone: +61 437 678 459

info@wedi.com.au
www.wedi.com.au



Be sure to ask for:
Certified wedi Installer.

Your local wedi distributor:

