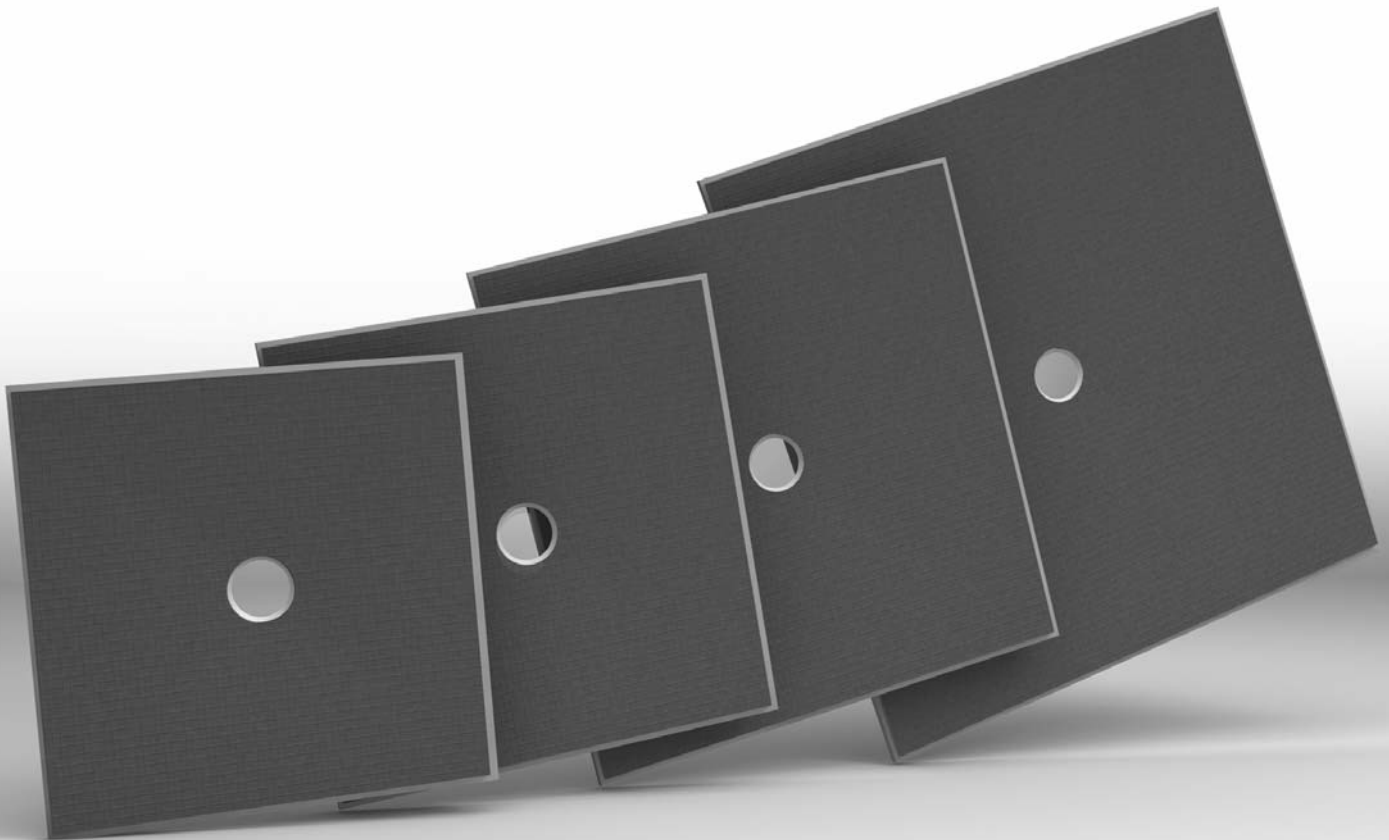


Assembly Instruction

wedi Fundo *Primo* | Steam Shower System



wedi® Fundo Steam Shower System



Residential and Commercial Use

Whether installed in a steam room with commercial 24 hour use or in a residential steam shower, wedi® building panels, when combined with wedi vapor barrier AEA VBC 500, form the industry's first sufficient solution to protect your tiled steam room against the threat of water vapor transmission through walls or ceilings. Water vapor transmission through building materials into walls or ceiling substrates can cause deterioration and mold. Traditional vapor retarders and waterproofing methods fail to address the challenges associated with higher permeability product choices or installation methods. They also allow water vapor pressure against walls and ceilings to build up due to lack of insulation. wedi systems offer both: The strength of a sufficient vapor retarder and an insulator in one product system.



Maximize Protection Against Water – Vapor Permeation and Damage

Wall and ceiling assemblies in steam rooms and showers must feature sufficient vapor retarder attributes. Very few assemblies or products suitable in tile substrate installations can be called a true vapor barrier or even a sufficient retarder. A sufficient retarder is measured in PERM, a property relating to the permeability to water vapor for a certain product or material. A PERM rating may depend on the thickness of such material. It is important that when determining the PERM rating, ASTM E96, Method E test standard is used. A product suitable for steam rooms should generally have a PERM rating of 0.5 or less, in commercial applications 0.1 or less. Most common waterproofing membranes do not come close to providing such properties and are either not properly tested or show higher PERM ratings than should be allowed for steam room applications.



The wedi Liquid Vapor Barrier AEA-VBC-500 is used in conjunction with wedi applications in residential and commercial steam room installations. It is formulated to protect wall construction against and eliminate aggressive vapor diffusion and migration through wall or ceiling assemblies. Where conventional waterproofing systems are not sufficient, our vapor-proofing membranes applied as a liquid is used extensively in the construction industry. Our proprietary vapor barrier coating copolymer latex is recommended to be applied by brush, roller, trowel, or spray. Application typically consists of two layers; one applied to 90 degrees to the other to eliminate voids that would allow moisture penetration. Dry thickness is approximately 1/16". Cure is by evaporation. Once cured, our product offers excellent flexibility and water vapor resistance, as well as a good bond surface for tile and stone installation. Due to its tenacious bond and self-healing (pinholes) and leveling capability over challenging surfaces, wedi Liquid Vapor Barrier AEA-VBC-500 is excellent for irregular surfaces, vertical surfaces and ceilings. Please go to wedicorp.com for more technical details regarding wedi Liquid Vapor Barrier AEA-VBC 500.



General Installation Recommendations for Steam Rooms

- Build a sufficient slope (2" per 1 ft.) into the ceiling so condensed water runs down toward walls without dripping.
- Lead the steam supply copper pipe into the lower third of the wall height so the steam can rise. Make sure the steam supply copper pipe is installed through the steam room wall in an area where users will not be directly exposed to hot steam and approximately 1 foot high from the ground. Heat protected fixtures are recommended.
- Properly insulate the copper steam pipe so the high temperature does not touch the wedi Building Panel foam (wedi resists up to 175° F).
- All installations of lighting should reflect heat downward. All installations of any fixtures must be vapor tight in product and installation.
- Make sure the fresh air supply and exchange is given, either by automated fans or through an open space (1") between glass door and floor tile.
- Use only surface finishes, setting materials and other products which are made to function and last in a warm/cold instant change climate and water vapor pressure environment.
- The installation of adequately placed slip and expansion joints in the tile or stone application is extremely important in steam rooms. Refer to TCNA Handbook details SR614-13 and EJ171.
- Doors must open to the outside and must not lock. No obstacles must be present in interior pathways of steam room.



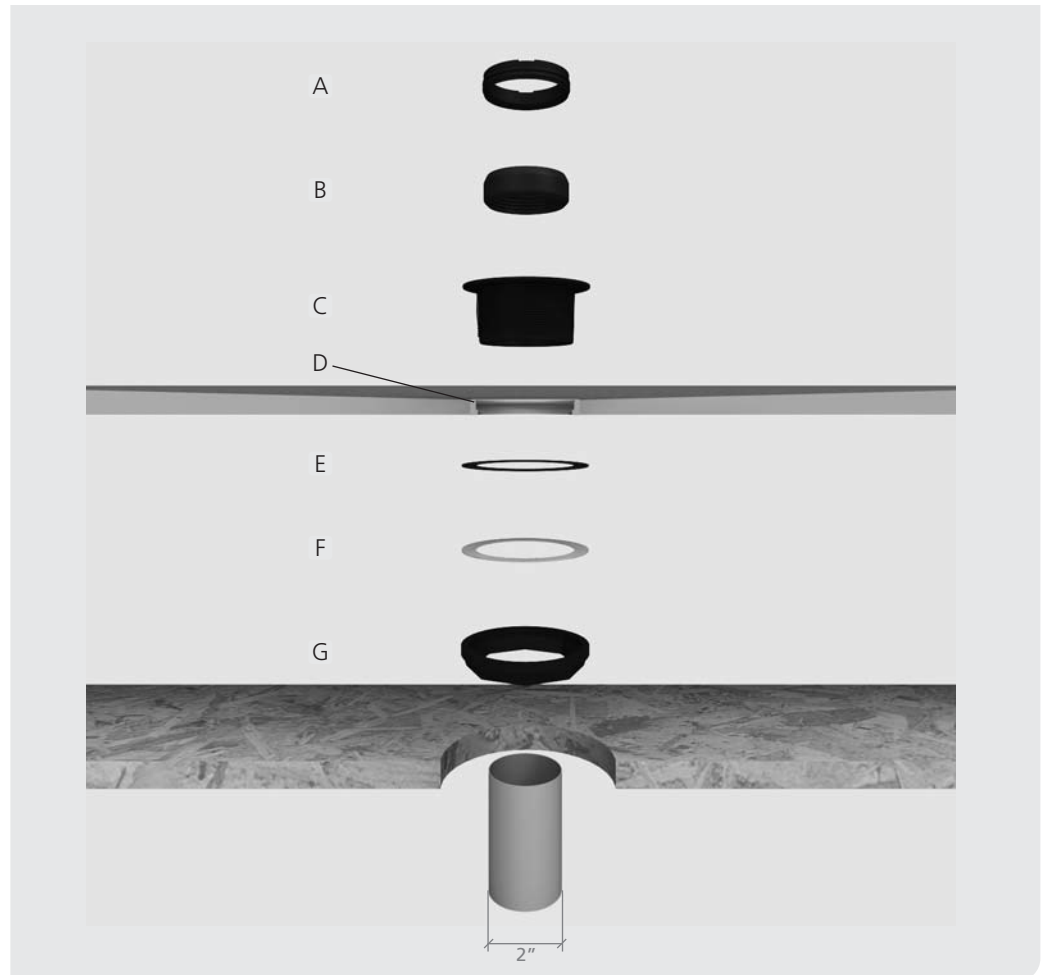
wedi® Shower Drain connection

Legend

- A Caulking nut
- B Rubber caulking gasket
- C Drain body
- D wedi sealant
- E Rubber gasket
- F Fiber gasket
- G Locking nut

Optionally a glue drain can be obtained from wedi. For a cement glue connection, the floor pipe must be cut 2 1/4 inches below the surface of the subfloor.

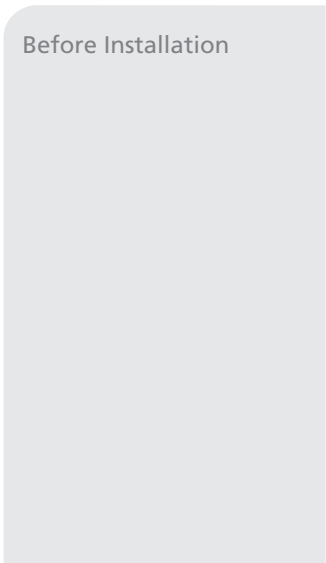
Optionally a brass drain can be obtained from wedi. The installation proceeds as shown for the standard drain provided with each Fundo base.



Tools

- Bucket
- Notch Trowel
- Drill with Thinset Mixer
- Utility Knife
- Straight Edge/T Square 5 ft or longer
- Speed Square
- Caulk Gun
- Handsaw
- Flat Head Screwdriver
- Screw gun
- Solid Putty Knife
- Paper Towels
- Level
- Circular Saw
- Saw Horse
- Tape Measure
- Permanent Marker
- Extension Cord for Powertools
- Shop vacuum cleaner
- Paint roller
- Paint tray

Installation instructions wedi Fundo onto wooden or concrete floors

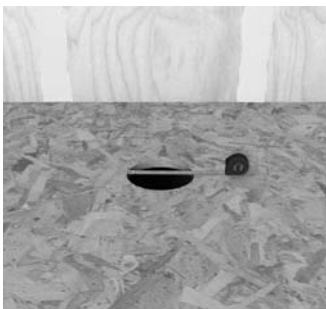


Before Installation

- Have 2 x 4 blocking pieces installed horizontally between wall studs to back the bottom of wedi wall panels
- Framing should be insulated at wall and ceiling areas.
- Have framing for ceiling pitched at rate of 2" per 12 inches ceiling. The ceiling framing must be backed by 2 x 4 pieces sideways to allow for proper backing of wedi wall and ceiling panel connection.
- Subfloor is sound, level and meets deflection criteria of maximum L/360" / as per IRC.

- Wooden or concrete structural substrates are dry and sufficiently loadbearing. Steel framing is sufficiently loadbearing.
- Floor joists not to exceed 16" o.c. Subfloor panels 3/4" T&G EGP or equivalent.
 - 2" PVC or ABS pipe is cut flush/ even with subfloor top surface and is in the correct position
 - 2" drain assembly below floor is stabilized and will not sink under water load.
 - Only wedi products (Building Panels, Curb, Joint Sealant and Fasteners) are used for

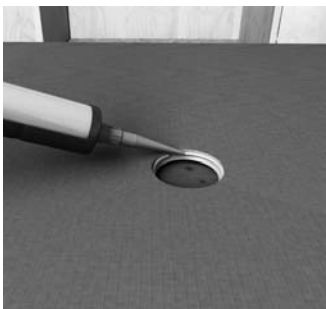
- wedi Fundo Shower System assembly.
- Installer has received instructions from wedi technical sales staff or is informed about proper installation methods as described
 - wedi shower bases can be cut to size using a skilsaw. The Z notch channel must be remade and cleaned from sawdust or contaminants.
 - Check that steam technology can be installed and connected to steam shower per manufacturer recommendation.



- 1** Cut the 2" pipe flush with or max 1/8" above the surface of the floor construction. Make sure that the cut out fits to the Fundo panel drain. Cut out a 5" diameter hole around the 2" pipe to allow the wedi drain to be inserted into the subfloor. The drain and trap have to be sturdily fastened to the sub floor.



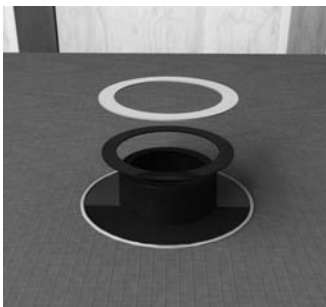
- 2** Assemble the drain unit following the instruction drawing.



- 3** Set up a continuous 1/4" bead of wedi sealant along the top side of the wedi Fundos' valve groove profile.



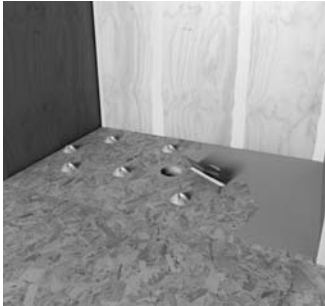
- 4** Drop the drain body firmly into the sealant.



- 5** Turn the Fundo pan upside down and apply the rubber and the fiber gasket.



- 6** Tighten the gaskets firmly to the pans steel ring using the locking nut. Make sure the drain body is still safely received in the valve-bead of sealant.



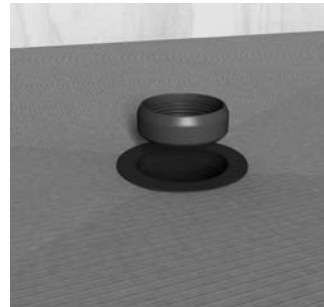
7 Skim coat the thinset ANSI 118.4 and comb through with a 1/4" x 1/4" notched trowel. Channels pointing to the entrance.



8 Trowel the thinset on the rear side of the Fundo again using a 1/4" x 1/4" notched trowel.

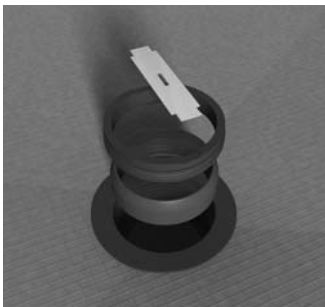


9 Press the Fundo firmly into the thinset bed, ensuring that the installation is level and void free. Apply some weight equally and for at least 30 minutes (thinset bags or tile boxes).



10 Set up the rubber caulking gasket (with the bevelled side up) around the 2" pipe in the subfloor. The rubber gasket must be flush with the upper end of the 2" ABS or PVC pipe.

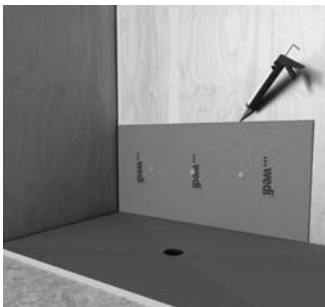
! Do Not use any Lubricants.



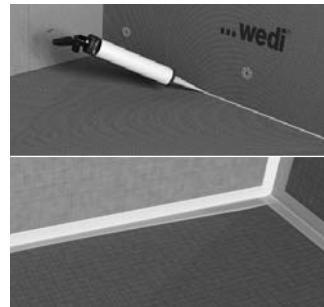
11 Tighten (squeeze) the rubber caulking gasket firmly with the caulking nut (use a flat headed screwdriver) and finally insert the plastic frame and strainer on top (without adhesive). The frame and strainer will be held in a grout joint only once tiling commences.



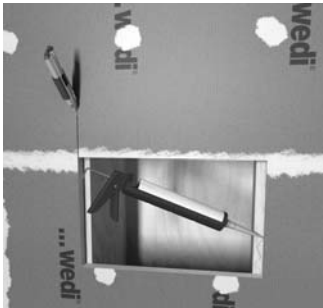
12 Set up a continuous 1/2" bead of wedi sealant along the pans channel on the outer perimeter and only in areas where you can immediately install a building panel into the fresh sealant. Push the wedi panel all the way down into the channel. Smooth out excess sealant using a putty knife.



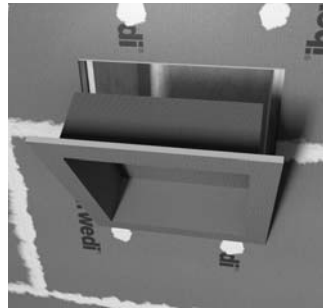
13 You are ready to install the wedi panels around the Fundo, fixed and sealed in the Fundo channels bead of sealant. Fasten the panels directly to the studs using one fastener per foot starting 1 foot above shower floor. One extra fastener is set in between seams of panels to create a flush transition. Make sure that you install wedi building panel on the ceiling using 1 fastener and washer per every 6 inches. The ceiling panel should be installed prior to finally installing and sealing the last wedi wall panels against the wedi panels on the ceiling.



14 Set up a continuous 1/2 bead of wedi sealant between and in all seams to adjacent panels or the base or components. Excessive sealant is smoothed out using a putty knife. An additional 1/2" bead of wedi sealant is set along all seams topically and spread flat over the seam so that the seams are covered 1" on either side of the seam. All fastener points are covered with sealant and coverage exceeds the fastener edge by 1 inch.



15 wedi Niches are installed in a cut out in the wedi wall and attach with it's flange right into the center of 16 o.c. studs. wedi joint sealant is set along the connection of wall to niche. Do not install wedi niches in framing of exterior walls as it will create a break in your basic insulation.



16 2 Fasteners each side of the niche are set to create a flush transition to the wall panels. Another 1/2" bead of wedi sealant is spread over fasteners and seams.



17 A continuous 1/2" bead of sealant is set into the channel and along the vertical curb notch part. A 1/2" bead of sealant is set against both wedi walls. A 1/2" bed of thin set mortar is set on the floor. The tightly cut to fit curb is pressed into the connection.



18 Weight is applied on and against the curb from the outside for 30 minutes. Another 1/2" bead of wedi joint sealant is applied over all curb connection seams and spread flat to cover the seams 1" each side of a seam.



19 Now apply wedi vapor barrier in two coats over all interior surfaces on wall, ceiling and seats or other wedi product inside the steam shower. Observe drying time between coats (30 – 45 minutes). Your steam shower is now ready for tiling.

wedi® Drain Cover Assembly insertion

Legend

- A wedi Strainer
- B Strainer Collar
- C Optional Extension Collar



- i** Insert Strainer Collar into pan hole (no glue/no screws). Caulk between part and tile to create a flexible grout joint. Extension Collar can be cut to height if part is needed. The caulk joint must not create a water barrier damming up the water draining through the thinset bed into the drain. Therefore the thinset layer must be continuous toward the drain.

After Installation

- Using a 2" drain plug, the wedi pressure fit drain/sealing gasket is water tested prior to ceramic tile installation and prior to other full surface flood tests.
 - All bottom perimeter joints, curb joints and vertical joints are covered with wedi Joint Sealant. Coverage should be continuously visible for at least ¾" to 1" on each side of the joint.
 - No mastic adhesives are used to install ceramic tile in the wedi system. A high quality modified thinset mortar is recommended. Tiles smaller than 2 x 2 inches require epoxy grout. Exception are pebble stones or river rock stones where a modified cement bade grout can be used.
 - Large format tile can be used on wedi Fundo bases. The tiles must be cut where the slope fields meet.
 - When complete wedi shower system is installed with wedi joint sealant, a water flood test may be performed only 2 hours after final application of wedi joint sealant (application temperature must be ambient/ interior with normal relative humidity and temperatures above 40°F).
- i** • Where wedi building panel or curb overs/caps are installed over horizontal surfaces (seats, curbs, tubdeck transitions) do not set any fasteners and do not allow the glass door installation to penetrate the wedi panel as it is your waterproofing.
 - Make sure that doors are installed tight to contain water inside the shower. Make sure doors are installed to only load bearing reinforced framing.
 - Where wedi buildig panel is installed over corners of a structure showing an angle other than 90° please miter the board edges to gain adhesion surface. Utilize a wedi sealing tape in addition to regular sealing for safety.



wedi corporation
1100 Landmeier Road Suite 200 · Elk Grove Village, IL 60007 USA
Tel.: +1-877-933-9334 · Fax: +1-847-357-9819
info@wedicorp.com · www.wedicorp.com