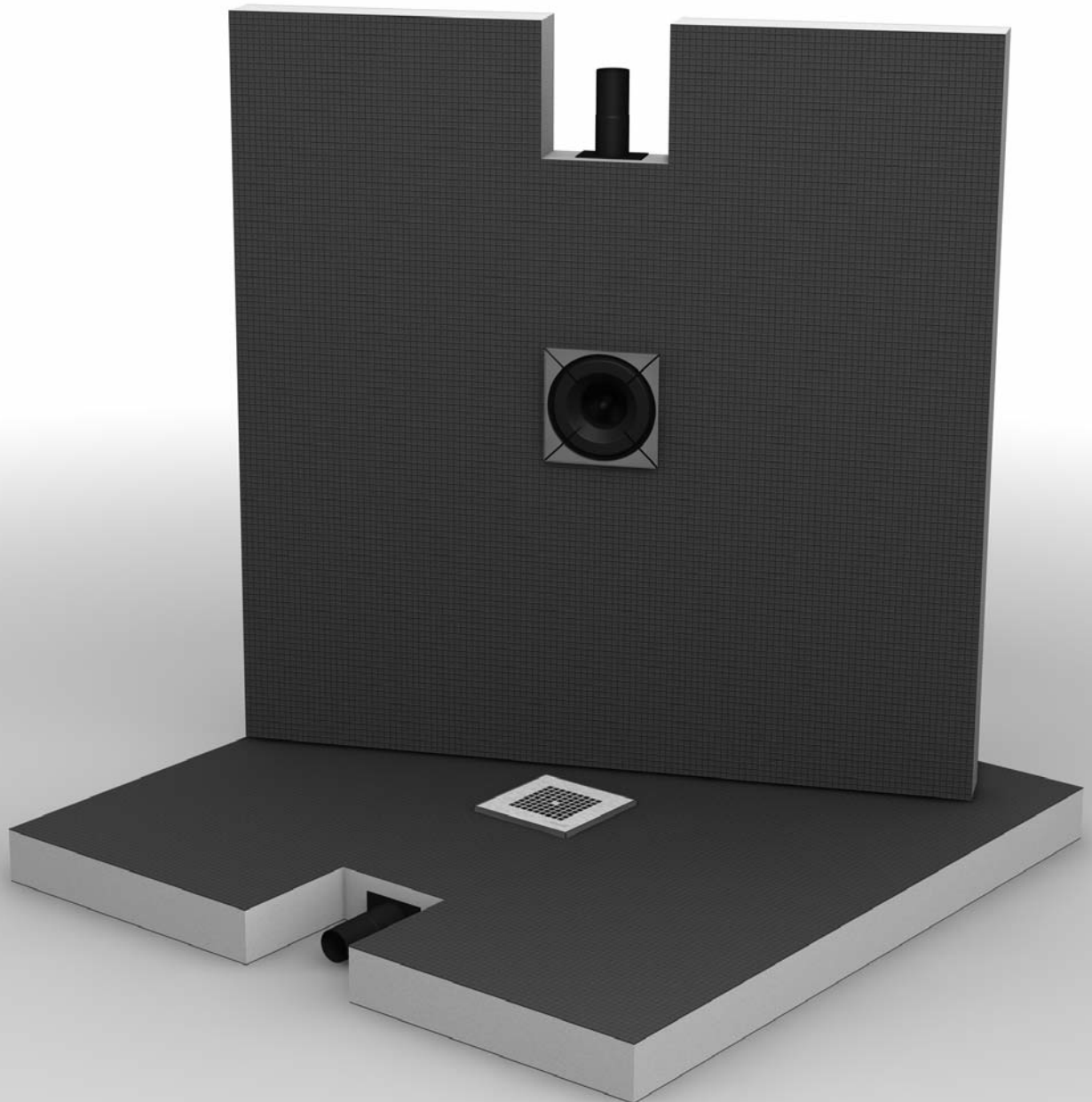
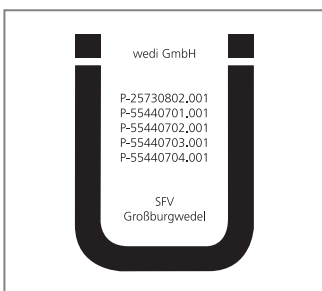
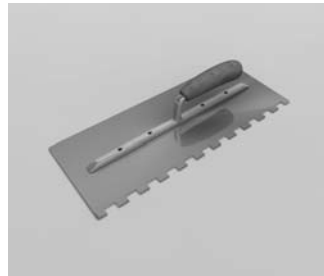
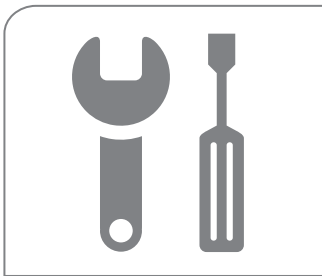
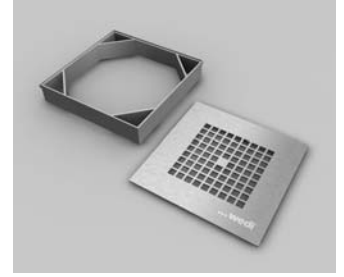
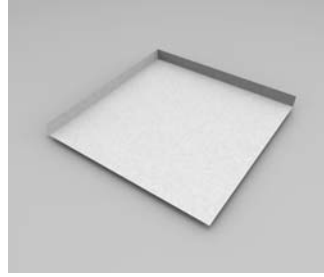
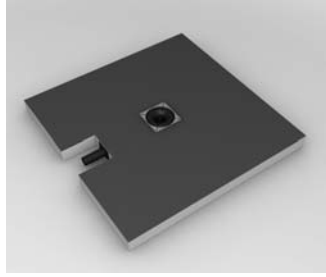
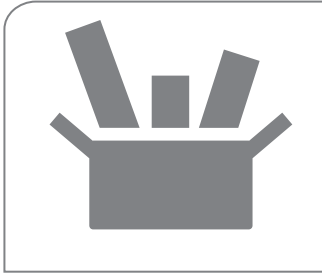
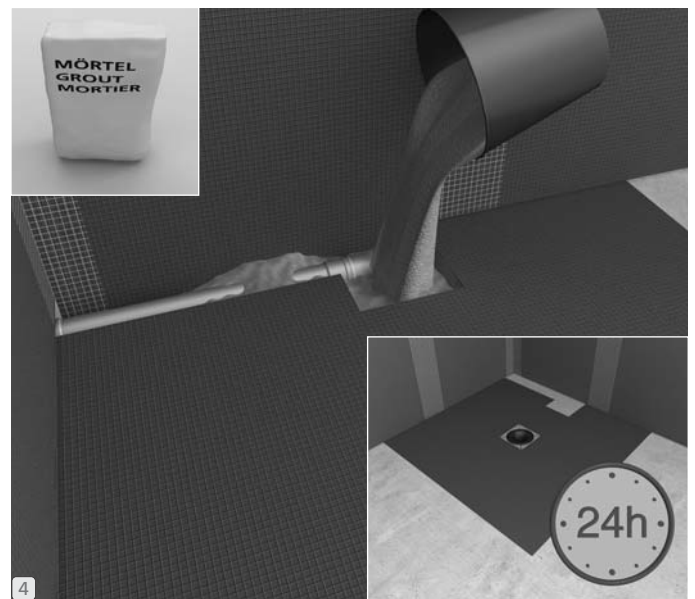
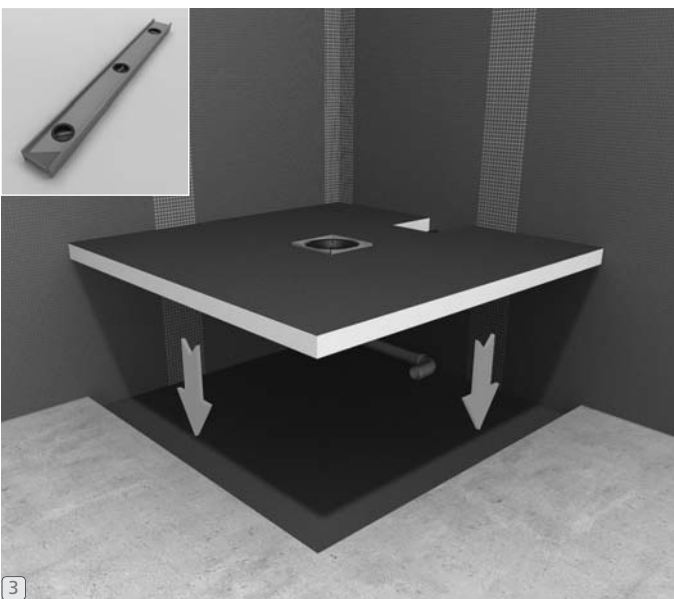
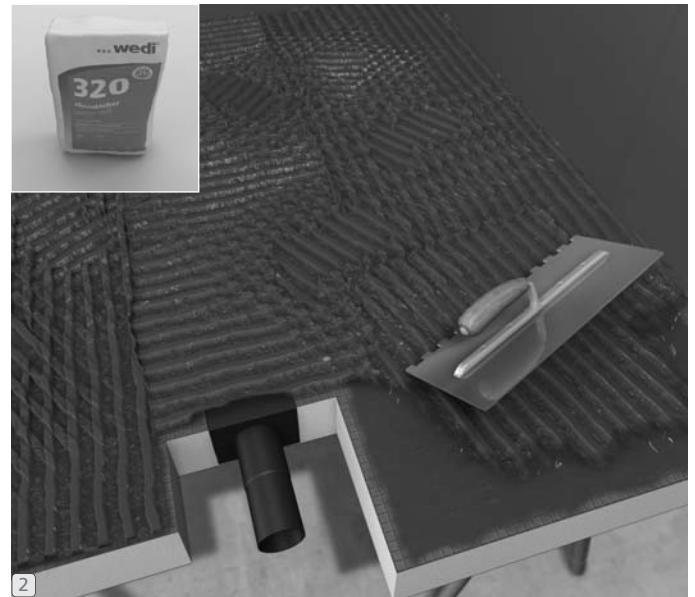
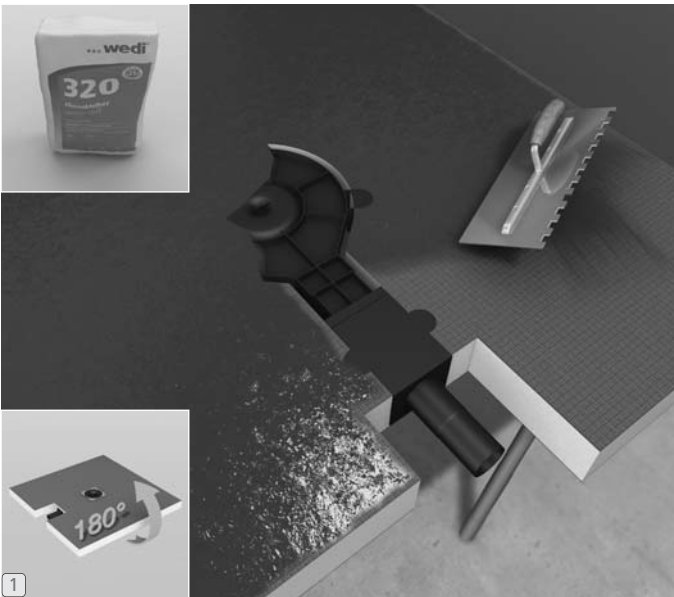
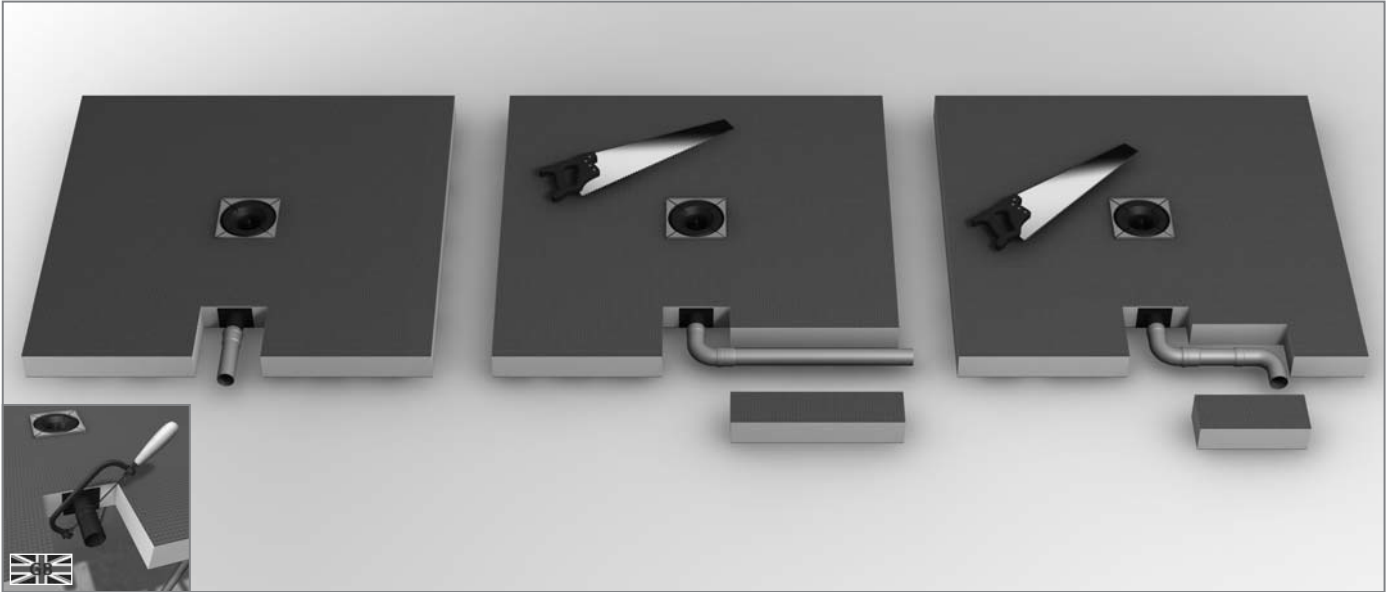


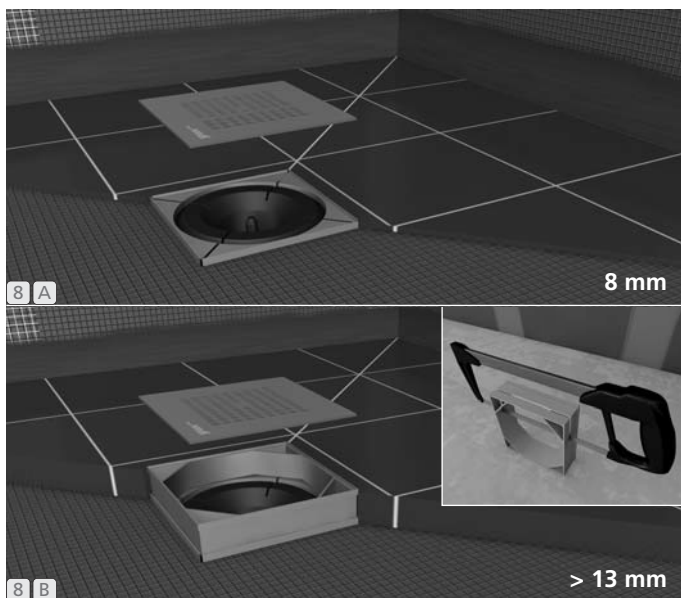
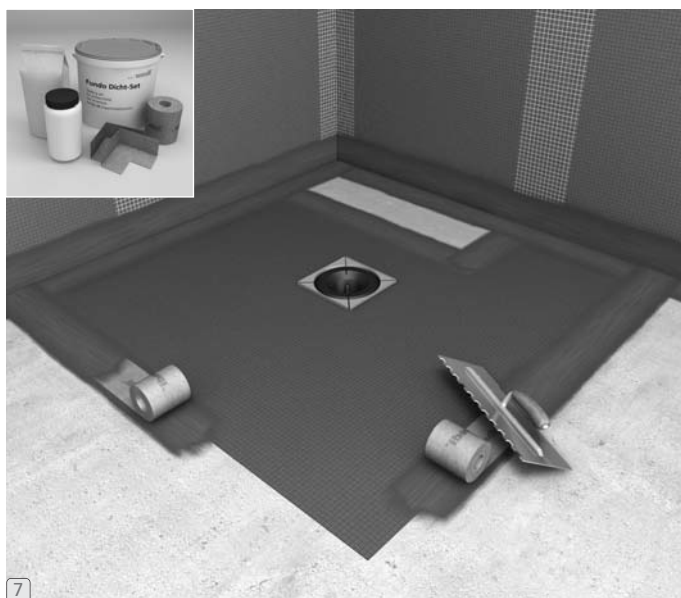
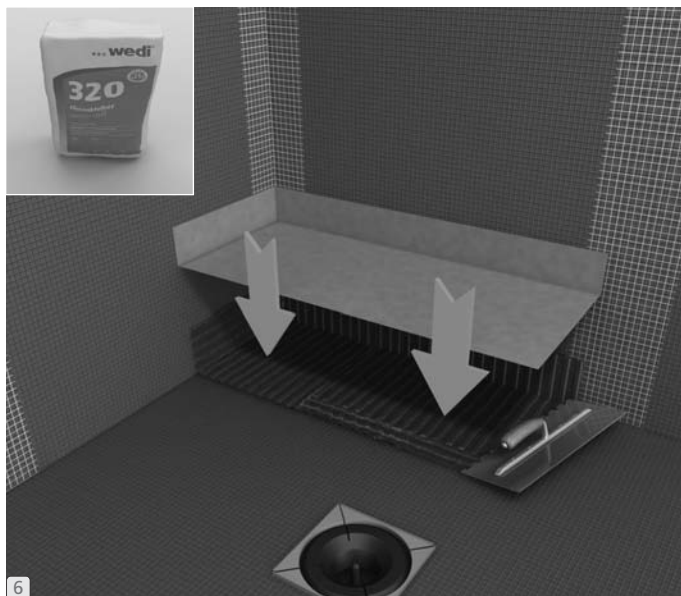
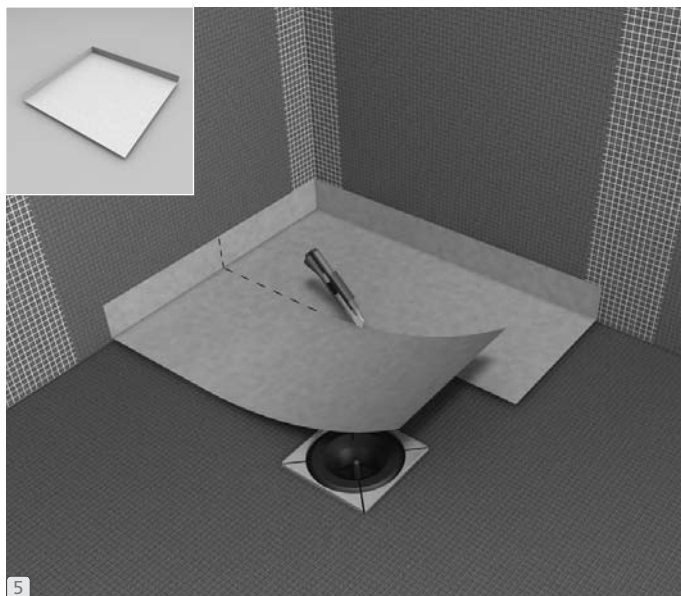
...wedi®

wedi Fundo *Plano*









- Ⓚ Følg altid lokale regler for membraner på gulv.
- Ⓢ Följ alltid de lokala reglerna angående membran på golv.
- Ⓝ Følg alltid lokale regler for membraner på gulv.
- ⓕ Paikallisia lattiakalvomääräyksiä on aina noudatettava.

...wedi®

wedi GmbH  
 Hollefeldstraße 51 · D-48282 Emsdetten  
 Tel. +49 2572 156-0 · Fax +49 2572 156-133  
 info@wedi.de · www.wedi.eu